



Keeping you informed about stormwater issues and Lexington Countywide Stormwater Consortium activities

## THE TIMES, THEY ARE A CHANGIN’



### Home Sweet Home

There was no crystal ball prediction that the world was “a changing” when plans were made by the Lexington Countywide Stormwater Consortium for public workshops, events, presentations, school classes, etc. all of which have been postponed in this COVID-19 pandemic. We are battling an invisible foe, but with all the courage that we mobilized for other wars, invention and interventions are coming to light that give us hope that this virus will be bridled and contained. We are all trying to follow the CDC guidelines and to reduce the spread. As we practice social distancing, our minds are more aware of our responsibility to one another. In that spirit, this newsletter begins with a few requests that will reduce pollution of our planet and allow for greater health and well being now and when the virus subsides.

### What can we do from home while “social distancing” to reduce the impact of pollution on local waterways?

**Trash the Poop.** When walking your dog(s), please collect the waste in a disposable bag and put the bag in the trash. That way doggie poop stays away from people and can’t be washed into a storm drain and out to a waterway when it rains.

**Trash the Grease.** Are you cooking more at home now? Please put kitchen grease in a can, set the can in a cool place to congeal and then toss it in the trash. Take used cooking oil to a Lexington County collection center to be recycled into biofuel. Doing this will prevent clogged plumbing and sewage leaks onto the ground where sewage can be washed into a storm drain and out to a waterway.

**Trash the Wipes.** Disinfectant wipes are a front line defense against COVID-19 and other viral and bacterial foes. No wipes are truly flushable. They all will clog plumbing very quickly and contribute to sewer line breaks. **Always** put them in the trash.

**Become a Litter Control Champion.** Join in the battle to reduce litter by safely picking up litter in and around your home. To learn more about the program, [Click Here](#). Contact the Lexington County Recycling Coordinator to become a Litter Control Champion at (803) 785-3340 or [tsander@lex-co.com](mailto:tsander@lex-co.com).

**Plant grass or flowers in bare spots on your lawn.** This allows stormwater to infiltrate into the soil rather than cause erosion and sedimentation.

**Harvest Rain:** Purchase a rain barrel and start conserving rain water for use during dry periods. **OR**, get on a list of participants for a future “Build Your Own Rain Barrel” workshop by contacting Mary Hite at [mhite@lex-co.com](mailto:mhite@lex-co.com) and providing your contact information.

### Inside This Issue

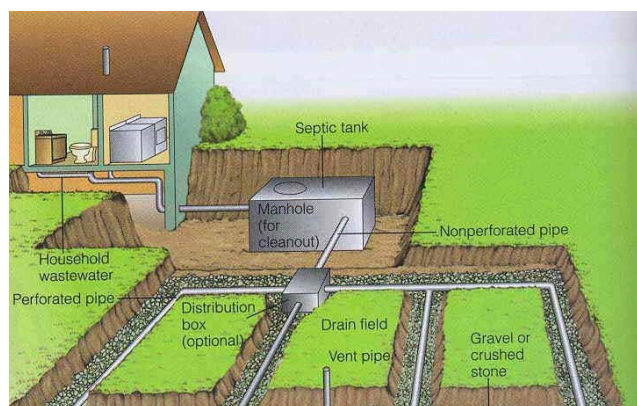
<i>Broken Septic System?</i>	2
<i>Did you Recycle a Christmas Tree?</i>	2
<i>2020 Wellness Fair</i>	3
<i>STEAM Expo</i>	3
<i>Recycling Event at Riverbanks Zoo</i>	4
<i>Clean Water Webinars for Earth Day</i>	5
<i>At Home? Look &amp; Listen!</i>	5
<i>Columbia Convention Center Hosts Midlands Green Business Meet-</i>	6

### IMPORTANT DATES

*Earth Day, April 22, 2020.*

*Next LCSC Quarterly Meeting TBA*

## BROKEN SEPTIC SYSTEM?



Do you have a damaged septic system and live in the Congaree Creek Watershed, (portions of West Columbia, Cayce, Springdale, Pine Ridge, South Congaree and a small area in Lexington County)? If so, there is substantial financial help to repair or replace your septic system that you can apply for now! To verify if you live in the Congaree Creek Watershed (the **only** requirement for some funding). [Click here](#) to locate your property on the

map. If you are located in the greenish area, you are eligible to apply for the Title 319 Water Quality Grant for Congaree Creek, Phase 2. You can receive at least 60% of the cost of repair or replacement of your system? You may be eligible for 80% of the cost if you qualify financially. There is no obligation to divulge your income if the 60% amount is suitable to you. A simple one-page application will get the process started. For more information on this opportunity and how to apply, please contact Gary Price, Environmental Coordinator at (803) 785-8121 or by email at [gprice@lex-co.com](mailto:gprice@lex-co.com).

## DID YOU RECYCLE A REAL CHRISTMAS TREE LAST YEAR?

**Below are statistics on how your real Christmas tree was repurposed into mulch for spring gardens.**

- ⇒ *Keep the Midlands Beautiful* partners with Lexington County and Richland County to recycle real Christmas trees into mulch from December 26 through January 11.
- ⇒ Half of the collection sites were located in Lexington County.
- ⇒ Forty (40) more tons of clean wood waste were collected in January, 2020 as compared to December 2019 due to the Christmas tree recycling program.
- ⇒ Chapin and Ball Park Road Collection Centers accounted for most of this increase. The average weight of a Christmas tree is thirty (30) pounds. Therefore, based on tonnage of trees collected, approximately 3,000 trees were recycled from Lexington County mostly during January.

# 2020 WELLNESS FAIR—JANUARY 28

**HEALTH DIRECTIONS WELLNESS FAIR, 3239 Sunset Blvd. W. Columbia**  
65 people interacted at the Lexington Countywide Stormwater Consortium display.



Rain Barrel Drawing Explained



Prizes for Pledges



Winner of Rain Barrel with LCSC Staff

Stormwater best management practices were presented as well as upcoming workshops and events

- ⇒ Recycling Event at Riverbanks Zoo
- ⇒ Rain Barrel Workshop in Irmo
- ⇒ Trash the Grease program and free lids
- ⇒ Trash the Poop campaign & free bag dispenser
- ⇒ Septic tank maintenance and available Congaree Creek Watershed Grant
- ⇒ Stormwater best management practices for the public (Prizes for Pledges to do them)

## ENVIROSCOPE DISPLAY FOR STEAM EXPO

Green Charter Schools located on Broad River Road in Columbia held an expo to demonstrate concepts in Science, Technology, Engineering, Art and Math. A *Lexington Countywide Stormwater Consortium* display at this event featured how pollutants are driven by stormwater runoff into waterways using an Enviroscape and how water sampling identifies specific pollutants in water bodies. Gary and Kelly Price, stormwater and water treatment professionals provided the display attended by 100 students.



### Enviroscape Demo

Mimics how waterways receive pollutants that are driven by rain events through a watershed. We all live in a watershed and contribute to pollution. We can help reduce it!



# RECYCLING EVENT AT RIVERBANKS ZOO



On Saturday, February 29, Counties of Lexington and Richland along with the City of Columbia joined forces with assistance from a mutual partner, Keep the Midlands Beautiful to provide an opportunity for residents to recycle electronics, paper, scrap metal, tires and items for Goodwill Industries.

The weather cooperated and residents came out in droves. This was the second combined County recycling event held at Riverbanks Zoo and Gardens. This year 766 vehicles drove through the event dropping off tons of recyclables. Of those, 377 vehicles (49%) came from Lexington County, 293 (38%)

from Richland County, and 95 (13%) from City of Columbia. One vehicle was of unknown origin. This was 243 more

vehicles driving through the event and dropping off materials than last year. See data. ↓



Electronics: 16.5 tons (33,000 lbs.)

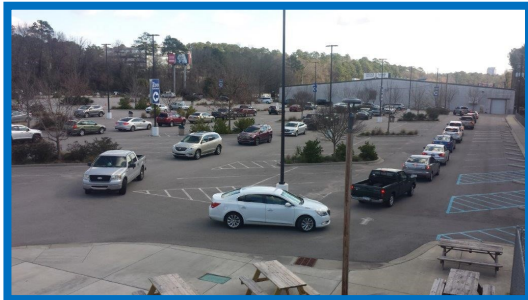
Paper: 12.93 tons (25,860 lbs.) This was 3.83 more tons than at any previous event.

Tires: 0.61 tons (1,220 lbs.)

Scrap Metal: 1.05 tons (2,100 lbs.)

Goodwill: 4 Gaylord boxes of clothing, household items and other items.

Cooking Oil: 0.19 tons (375 lbs.)



Traffic Through Parking Lot



Cooking Oil Station

The date of the next recycling event is on hold, as is almost everything except being at home and doing things around the house such as cleaning out closets, garage, the shed and basement. So you can bet that when recycling events resume, residents will be flocking to them!

# CLEAN WATER WEBINARS FOR EARTH DAY

To register for this webinar by April 17, [Click Here](#).

Clemson Cooperative Extension Water Resources Team



**CLEMSON**  
COOPERATIVE EXTENSION

**i INFO**

**A week of webinars!**

Dates: 4/20 – 4/24  
Time: 12:00PM – 12:30PM

*Space is limited!  
Pre-registration is required by April 17th!*

Register here:  
<https://www.surveymonkey.com/ZRCKBY6>

Cost: FREE

Contact: Ellen Sturup Comeau  
[ecomeau@clemson.edu](mailto:ecomeau@clemson.edu)

**Questions?**  
Contact Ellen Sturup Comeau at  
[ecomeau@clemson.edu](mailto:ecomeau@clemson.edu)

## Being a Neighbor for Clean Water

### Celebrate Earth Week with Lunch-and-Learn Webinars

This year marks the 50<sup>th</sup> Earth Day! To celebrate, tune in every day at lunch during Earth Week to learn about how simple actions can help you be a good neighbor and keep your local waterways clean!

Water Resources Extension Agents from around the state came together to create this free series of five webinars on the following topics:

- April 20:** Keeping our Water Clean: Understanding Stormwater
- April 21:** Shoreline Management for your Pond
- April 22:** Reducing Pollution with Floating Wetlands
- April 23:** Rain Gardens
- April 24:** Water-Wise Landscaping

Clemson University Cooperative Extension Service offers its programs to people of all ages, regardless of race, color, gender, religion, national origin, disability, political beliefs, sexual orientation, gender identity, marital or family status and is an equal opportunity employer.

<https://www.clemson.edu/extension/water/index.html> Clemson University Cooperative Extension

# AT HOME? LOOK & LISTEN!

Have you seen or heard any of these birds this week?



**Blue Jay**  
'jeer' call



**Mockingbird**  
whistling



**Tufted Titmouse**  
'peter-peter-peter'



**Song Sparrow**  
sounds like R2D2



**Carolina Wren**  
'germany-germany-germany'



**American Robin**  
'cheerily cheerio cheer-up'



**Cardinal**  
two whistles then longer run of tweets



**Mourning Dove**  
'coo-OOOH-coo-coo'

# COLUMBIA METROPOLITAN CONVENTION CENTER HOSTS PRESENTATION & TOUR



On February 18, 2020 members of Midlands Green Business and guests gathered in the *Senate* room of the Columbia Metropolitan Convention Center for a presentation and behind-the-scenes tour. This opportunity to share ideas with other “Green” business members was provided by the Convention Center’s Sustainability Committee. Together, they strive to maintain high environmental standards in energy efficiency, waste management, recycling, purchasing, food preparation and individual behaviors. Here are some examples below of the commitment to limit their carbon footprint for the betterment of our community and the planet.

Traude Sander, Lex. County, greets MGB Members

- \* Their catering group regularly donates leftover food to local charities
- \* Used cooking oil is picked up and recycled responsibly
- \* Produce is purchased from South Carolina farms.
- \* All lighting is now LED, resulting in approximately 67% less energy used annually.
- \* Heating and air are monitored when buildings are unoccupied and during move-in days.
- \* The organization participates in a single stream recycling program. Recycling bins are highly visible and marked to distinguish them from trash receptacles in public areas.
- \* They have gone paperless in multiple areas of the organization.
- \* They are working toward LEED Certification for existing buildings.



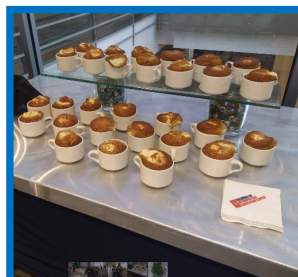
Herbs used in kitchen are grown on the rooftop of the Convention Center.



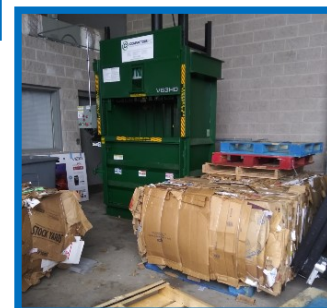
Mary Pat Baldauf, Columbia, introduces Speakers



Laura Blake Orr, *Keep the Midlands Beautiful* with Green Business Member



No-Waste desserts made by Convention Center Executive Chef



Efficient baler prepares cardboard for recycling.





### **Contact Information**

Lexington County Land Development  
Attn: Environmental Coordinator  
212 South Lake Drive, Suite 400  
Lexington, SC 29072  
Phone: 803-785-8634

**The next quarterly meeting of the *Lexington Countywide Stormwater Consortium* is on hold until further notice.**

*The Lexington Countywide Stormwater Consortium (LCSC) is comprised of the communities of Cayce, South Congaree, Springdale, West Columbia, Irmo, Pine Ridge, Lexington, and Lexington County. We seek to protect Lexington County's waterways and natural resources for the benefit and enjoyment of our citizens.*

**We're on the web [LCSWC.com](http://LCSWC.com)**