

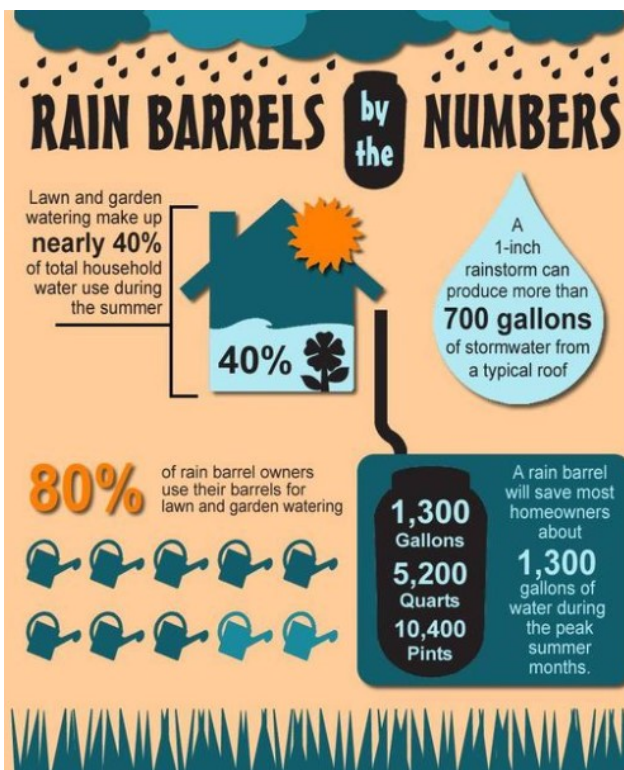
WATER WATCH

Keeping you informed about stormwater issues and
Lexington Countywide Stormwater Consortium activities

April Showers Bring May Flowers

We have all heard the saying “Aprils showers bring May flowers.” Well, April showers also bring water pollution. Stormwater runoff is water that falls onto impermeable surfaces and flows until absorbed or enters a storm drain. This runoff picks up anything in its path (litter, oil, yard scraps, etc) therefore creating pollution. This polluted runoff will then enter the nearest waterway. With the spring months arriving, there will be more stormwater than we have had recently. Rain harvesting can be used to prevent water pollution. Rain harvesting consists of catching water as it flows off of roofs and storing it to be used for other purposes. That water can be used for just about anything from watering your garden to washing your car. During a 1-inch rain storm, a 1000 square foot roof can generate 600 gallons of water. Imagine how much this can save you! By catching this water before it flows into the storm drains, less pollution is able to enter the nearby streams and creeks.

Come to the next Backyard Benefits workshop on April 29th at the Edmund Landfill to build your own rain barrel!



Inside This Issue

“Bee” a Friend to Pollinators	2
Sustainable Fishing	3
Secure Your Load It's the Law!	4
Storm Drain Tagging Begins Again	4

IMPORTANT DATES

- March 18th— Paper Shredding and Tire Recycling @ Leesville College Park
- April 21st— Hazardous Household Waste Collection @ ECOFLO
- April 22nd— Hazardous Household Waste Collection @ ECOFLO
- April 29th- Backyard Benefits Workshop

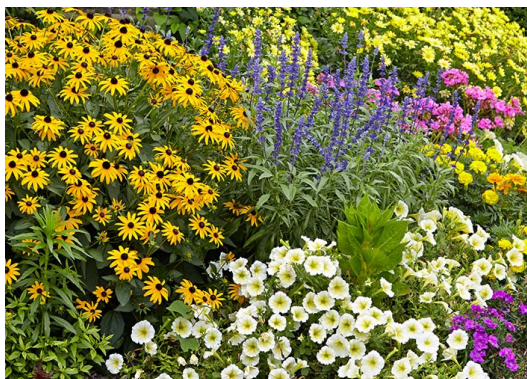
“Bee” a Friend to Pollinators

Most people have heard of the “Save the Bees” campaign and its success, but do you know why bees are so important? Bees, along with butterflies, birds, flies, and bats, are pollinator species. Pollinators get their food from flowers (and other pollinated plants) and in return move the pollen to other plants and help them thrive. Thriving plants lead to a thriving community including the humans. These pollinators need our help, so



here are some tips to “bee” a friend:

- * Plant flowers in groups rather than separately. This makes it easier for bees to get all their food in one place.
- * Bees can't swim. Place stones or pebbles in your water source to help the pollinators climb out.
- * Dandelions and clover are great food sources! Designate a small patch to let these weeds grow.
- * Create a habitat of dead plant stems, leaves, twigs, mulch, and some sticks. This serves as a home for the young and save lives during a storm.



Now that you have some tips, make some small changes that will help your community gain healthy and beautiful plants and animals! Creating a pollinator-friendly garden can be a fun activity for the whole family.

Sustainable Fishing

According to the National Geographic, rivers and lakes are the most degraded ecosystems in the world. Since 1970, 83% of global freshwater species have gone extinct. Overfishing plays a large role in these scary statistics.

Luckily, we can help fight overfishing- even here in Lexington, SC. To prevent overfishing in local waterways, the Department of Natural Resources has set regulations on what species can be kept.

For example, a regulation for Lake Murray is that you cannot keep more than 5 largemouth bass per day and those cannot be less than 14 inches. It is important for our waterways' health



to be aware of the regulations while fishing. But what about buying seafood? Luckily there is a ranking system that you can follow to ensure you buy the most sustainable option. Anything with the blue label shown

below is a safe bet. Some grocery stores, such as Publix, are transparent with their seafood and display the ranking in store. A good rule of thumb is the smaller the creature, the more sustainable it is to eat.

There are many good sources to learn which the best to eat is, but Seafood Watch is very reliable: <https://www.seafoodwatch.org/> Next

time you are buying seafood, look to see if your favorite is as sustainable to eat as you thought.



Secure Your Load It's the Law!



Did you know that SC Litter Laws require all transported loads to be secured to prevent the escape of materials. This includes securely fastening any materials, using a tarp to cover their load, and containing liquids in a sealed container. If anything falls out and is not removed by the driver, it is considered illegal dumping. Illegal dumping is punishable by hefty fines and in some cases, up to

one year in prison. Take the extra step to make sure anything in your vehicle is properly secured to keep our roads safe and clean. Most items can be brought to any of Lexington County's collection & recycling centers. More information can be found at <https://www.lex-co.sc.gov/departments/solid-waste-management> or their new Facebook page @LCSCSWM

Storm Drain Tagging Begins Again

Are you in need of a volunteer opportunity? Do you want to help keep LexCo's waterways clean? Well then you're in luck! The LCSC has received the supplies and are able to begin the storm drain tagging program again. All you need to do is count how many storm drains you have in your area (neighborhood, church lot, etc) and let us know the number. We provide the supplies and a short training, then we go back and pick the drills up when done. The drain tags are used to remind people that only stormwater should be entering the drains and inform people of the MS4 program. This is a perfect opportunity to get involved with the LCSC! You can even be featured on the County Facebook!

Link to sign up: <https://forms.gle/Yi9dfrEw4sxX5rza6>





Contact Information

Lexington County Land Development
Attn: Environmental Coordinator
212 South Lake Drive, Suite 400
Lexington, SC 29072
Phone: 803-785-8634

The next quarterly meeting of the *Lexington Countywide Stormwater Consortium* is Wednesday, May 17, 2023 in the Town of South Congaree

The Lexington Countywide Stormwater Consortium (LCSC) is comprised of the communities of Cayce, South Congaree, Springdale, West Columbia, Irmo, Pine Ridge, Lexington, and Lexington County. We seek to protect Lexington County's waterways and natural resources for the benefit and enjoyment of our citizens.

We're on the web LCSWC.com