

>>> LCSC PRESENTS <<<

WATER WATCH

Keeping you informed about local stormwater issues and LCSC activities



The Lexington Countywide Stormwater Consortium (LCSC) is comprised of the following communities: Lexington County, Cities of Cayce and West Columbia, and the Towns of South Congaree, Springdale, Irmo, Pine Ridge, and Lexington.

We seek to protect the natural resources in Lexington County from pollution caused by residential and business activities. We accomplish this by the following:

- (1) Creating a model collaborative water quality education program,
- (2) Fostering citizen involvement and encouraging behavioral change, and
- (3) Enforcing state and local stormwater regulations.

Through these accomplishments, we strive to achieve clean and healthy streams, rivers, lakes, and groundwater.

INCLUDED IN THIS ISSUE

STORMY WITH A CHANCE OF RUNOFF



READ MORE ON PG. 1

Tips and tricks for smarter and stormwater-friendly lawn care.

READ MORE ON PG. 2

Learn about the harmful effects of soapy runoff.



SOAPS, SUDDS, AND STREAMS

STORMWATER PUZZLES



READ MORE ON PG. 3 & PG. 4

Crossword answers are revealed! Time to see your next challenge.

READ MORE ON PG. 5

You won't want to miss this!



UPCOMING EVENTS, INFO, & FYIS

STORMY WITH A CHANCE OF RUNOFF

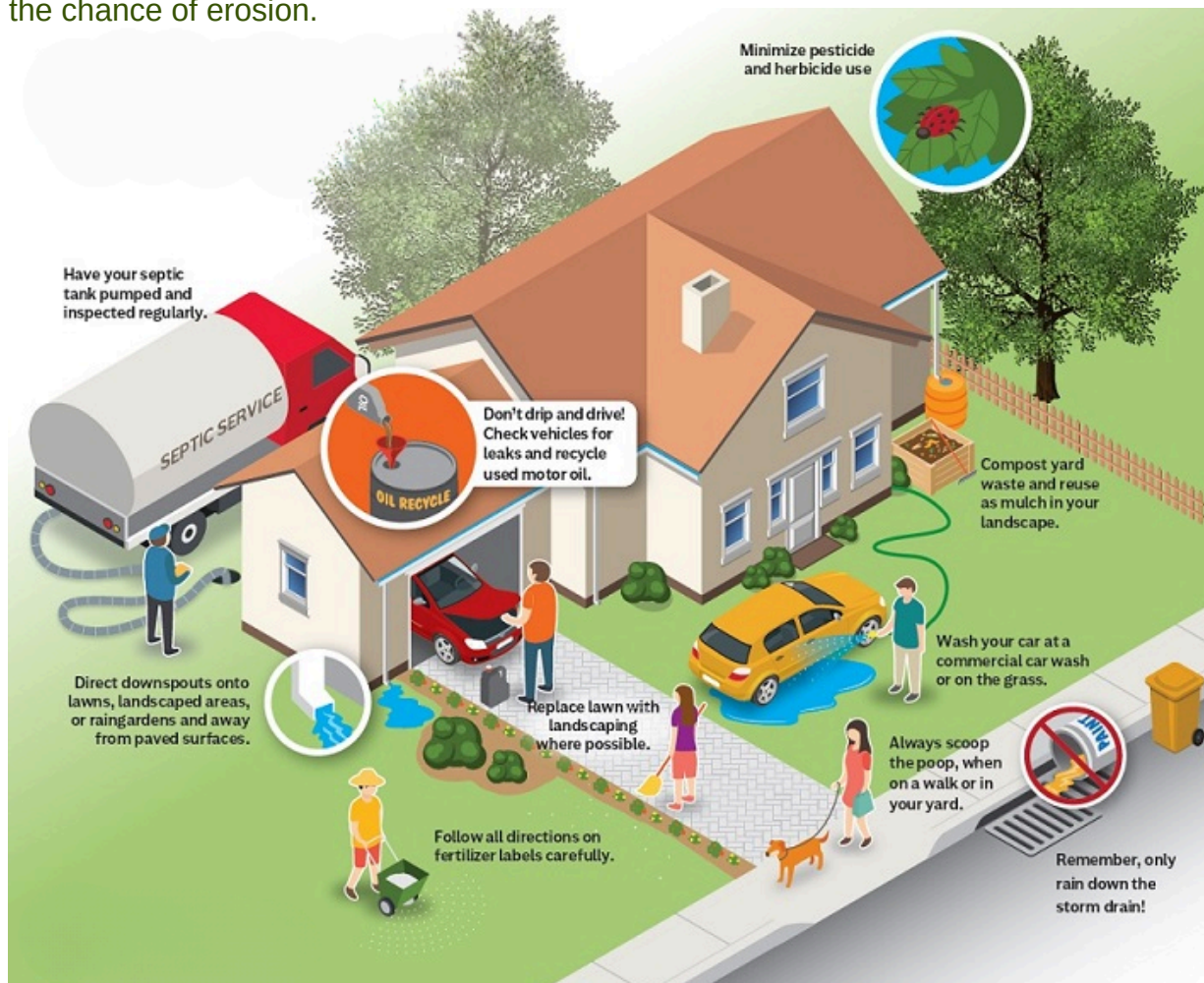
1

>>> Lawn smarter, not harder!

Trying to improve water quality and reduce stormwater runoff may seem impossible, but the solutions are much easier than they seem. Many stormwater pollutants make their way into the local waterways right from your own backyard, so all it takes is a few simple changes to do your part and make a difference in your community!

Here are ways you can maximize your lawn care while minimizing your environmental impact:

- All free-flowing water from downspouts, hoses, etc. should be directed to grassy areas instead of solid surfaces like your driveway. Think about building a rain barrel at one of our workshops to save rainwater (and decrease that water bill)!
- Compost leaves and grass blades instead of blowing them in the streets. Organic materials can be just as harmful to stormwater by contributing to excess nutrient levels in nearby streams.
- Limit fertilizer (and pesticide) use, especially if the forecast calls for rain in the next day or two. Use compost when you can!
- Do not overwater your grass! If you plan to water your lawn, do it sparingly and in the early morning. Conserve moisture in your lawn by setting your mower to 3 inches.
- Landscape your yard with pervious materials, plants, and trees that will help capture rainwater before it reaches the street. Native vegetation and sufficient aeration will also reduce flooding on your property!
- Keep an eye on your septic system to prevent overflows from occurring. Remember: FOWGs (**F**ats, **O**ils, **W**ipes, and **G**rease) should never go down your drains.
- If your yard is next to a creek or other natural water source, try to maintain a buffer of at least 2-3 feet to reduce the chance of erosion.



SOAPS, SUDDS, AND STREAMS



Soapy runoff and stormwater impacts

Soap doesn't always mean clean because when it ends up in our stormwater, it means pollutant! While activities like pressure washing and power washing may sound like convenient and harmless ways to clean surfaces, they create dirty runoff that travels

directly into the stormwater system. This runoff contains soaps, oils, metals, sediment, and chemicals from the surfaces you are washing, goes untreated, and makes its way straight into our streams. As a result, vegetation, marine life, and water quality are severely impacted by these pollutants.

However, don't use this as an excuse to avoid your outdoor chores! There are guidelines to responsibly carry out your cleaning:

1. Use dry cleanup methods first (sweep, blow, vacuum). Dispose of debris in the trash.
2. Soak up oil and fluids using absorbents (cat litter, sawdust, sand) and dry-cleanup methods before washing. This goes in the trash, too.
3. Direct dirty runoff into a lawn or landscaped area away from the storm drain system. (If the water cannot be directed here, collect for disposal to the sanitary sewer via a clean out, toilet, or sink.
4. Block storm drains and contain runoff. Berms, storm drain covers or mats, vacuum pumps, and filtering/absorbent equipment are good proactive measures to put in place beforehand.

Harmful substances which enter the stormwater system are considered illicit discharges. Refer to your county's page to report potential illicit discharges, and look out for our streams!

STORMWATER CROSSWORD

➤➤➤ The answers you've been waiting for!
Are you a stormwater expert?

Take the Stormwater Runoff Challenge

Across:

- 1) The area of land that drains into an estuary, lake, stream, or groundwater is known as a _____.
- 4) The _____ of speeding boats can erode shorelines.
- 5) Maintaining your _____ tank will help to prevent bacteria and nutrients from leaking into groundwater and surface waters.
- 7) Wetland plants act like a natural water _____, removing harmful pollutants from stormwater runoff.
- 8) Leave your grass clippings on your _____ to reduce the need for commercial fertilizers.
- 9) A single quart of motor _____, if disposed of improperly, can pollute 2 million gallons of water.
- 10) Fertilizers and animal wastes contain _____ that "feed" algae and other aquatic plants harmful to water quality.
- 12) Polluted runoff from both rural and _____ sources has a significant impact on water quality.
- 16) Storm _____ don't always connect to sewage treatment plants, so runoff can flow directly to rivers, lakes, and coastal waters.
- 18) Follow directions carefully when applying _____ on your lawn—more isn't always better.
- 19) Polluted runoff (also called _____ source pollution) comes from so many places that it's hard to "pinpoint" a source.
- 20) Yard and vegetable food waste are suitable additions to a _____ pile.

Down:

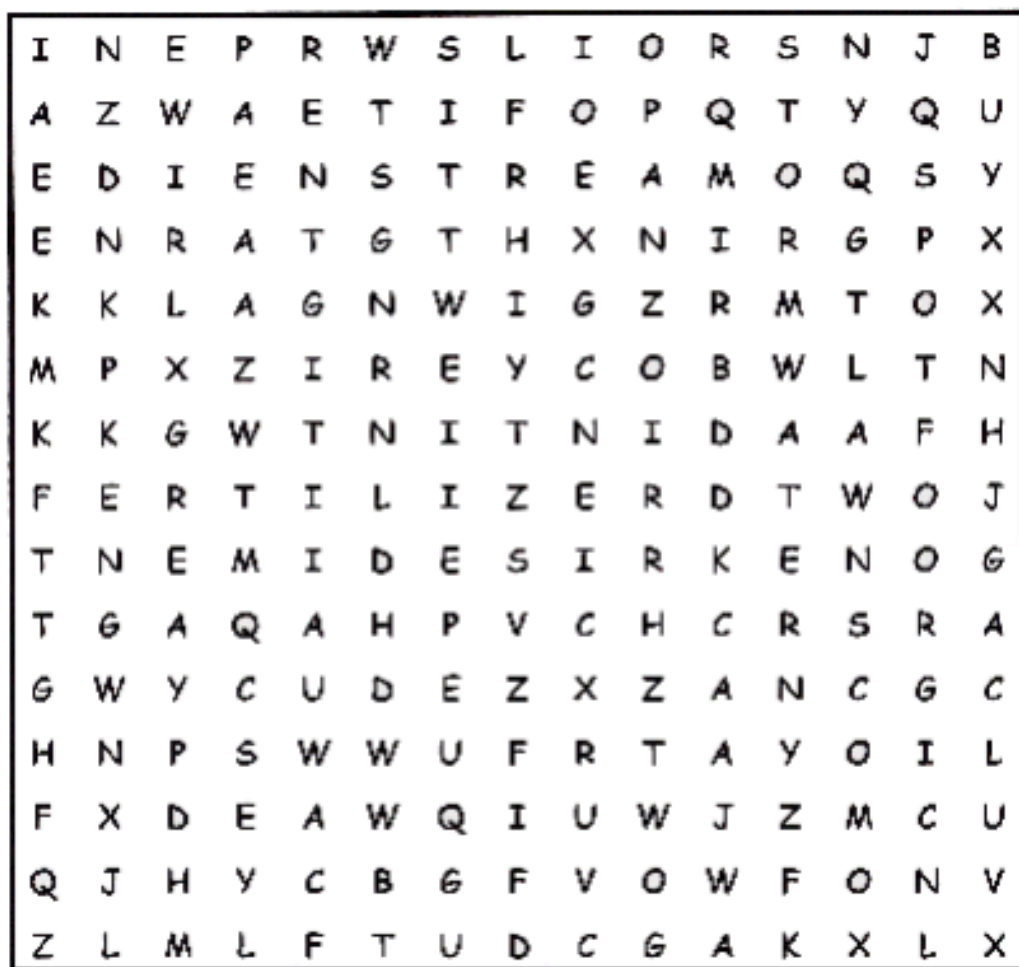
- 2) Don't dump used motor oil into storm drains. _____ it!
- 3) _____ of soil from barren land can cloud nearby streams.
- 4) _____ prevent flooding, improve water quality, and provide habitat for waterfowl, fish, and wildlife.
- 5) Marking "Do Not Dump, Drains to Bay" on a _____ is one way to educate people about polluted runoff.
- 6) Excess sediment, nutrients, toxics, and pathogens are all types of runoff _____.
- 11) Polluted _____ is the nation's #1 water quality problem.
- 13) The cattail is one wetland _____ that helps purify polluted runoff.
- 14) Too much _____ in water can harm aquatic life.
- 15) Proper crop and animal management on _____ helps to control water pollution.
- 17) _____ impact development helps control stormwater pollution through conservation approaches and techniques.



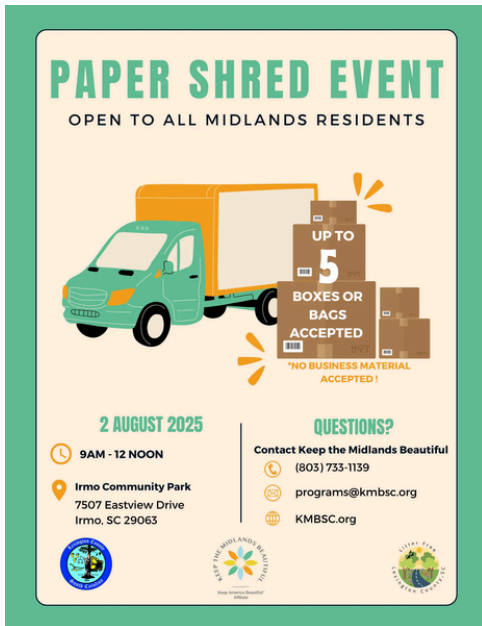
STORMWATER WORD SEARCH

➤➤➤ The quest for pollutants and solutions!

Concrete
Drain
Driveway
Fertilizers
Lawn
Oil
Pesticides
Plants
Rain
Rooftops
Sediment
Stormwater
Stream



UPCOMING EVENTS, INFO, & FYIS



➤➤➤ PAPER SHRED EVENT

Join Keep the Midlands Beautiful on **August 2nd** for their Paper Shred Event! As a **Midlands Resident**, take advantage of this safe and secure way to dispose of your personal documents. The event will take place at **Irmo Community Park** from **9AM-12PM**.

➤➤➤ HOUSEHOLD HAZARDOUS WASTE DROP OFF

For Lexington County Residents Only. Head on over to the Republic Services Collection Center (1741 Calks Ferry Road in Lexington) to responsibly dispose of your hazardous waste items! See the list of accepted materials below. The drop off dates are **Friday, August 22nd 9AM-3PM** and **Saturday, August 23rd 9AM-3PM**.



Accepted Materials Include:

- Acids
- Brake fluid
- Bug spray
- Car Wax
- Carburetor cleaner
- Degreasers
- E-Cigarettes
- Fertilizer w/ weed killer
- Fire extinguishers
- Furniture stripper
- Glue with solvents
- Insect killer
- Lighter fluid
- Lithium Ion Batteries
- Mercury including thermometers, thermostats and debris
- Mothballs
- Nail Polish Remover
- Paint, liquid (limit 8 gal)
- Paint related materials (ex. thinner)
- Perfume (Body Sprays)
- Pesticides, insecticides, fungicides, herbicides
- Polish with solvents
- Pool chemicals
- Roach and ant poison
- Rodent bait
- Spot remover
- Spray paint
- Stain, varnish and lacquer
- Turpentine
- Weed killer
- Wood preservatives



LET'S CONNECT

Learn more at lcswc.com

 County of Lexington, SC



**Lexington County
Land Development**

212 S Lake Drive, Suite 401
Lexington, SC 29072
Phone: (803) 785-8121