

&gt;&gt;&gt; LCSC PRESENTS &lt;&lt;&lt;

# WATER WATCH

*Keeping you informed about local stormwater issues and LCSC activities*



The Lexington Countywide Stormwater Consortium (LCSC) is comprised of the following communities: Lexington County, Cities of Cayce and West Columbia, and the Towns of South Congaree, Springdale, Irmo, Pine Ridge, and Lexington.

We seek to protect the natural resources in Lexington County from pollution caused by residential and business activities. We accomplish this by the following:

- (1) Creating a model collaborative water quality education program,
- (2) Fostering citizen involvement and encouraging behavioral change, and
- (3) Enforcing state and local stormwater regulations.

Through these accomplishments, we strive to achieve clean and healthy streams, rivers, lakes, and groundwater.

## INCLUDED IN THIS ISSUE

### PFAS 101: WHAT'S IN YOUR WATER



#### READ MORE ON PG. 1

Exploring the impact of PFAS on health, water, and everyday life.

#### READ MORE ON PG. 2

Water quality after the storm.



### STORMWATER SUMMER

### STORMWATER CROSSWORD PUZZLE



#### READ MORE ON PG. 3

Answers will be revealed in next month's newsletter!

#### READ MORE ON PG. 4 & PG. 5

You won't want to miss this!

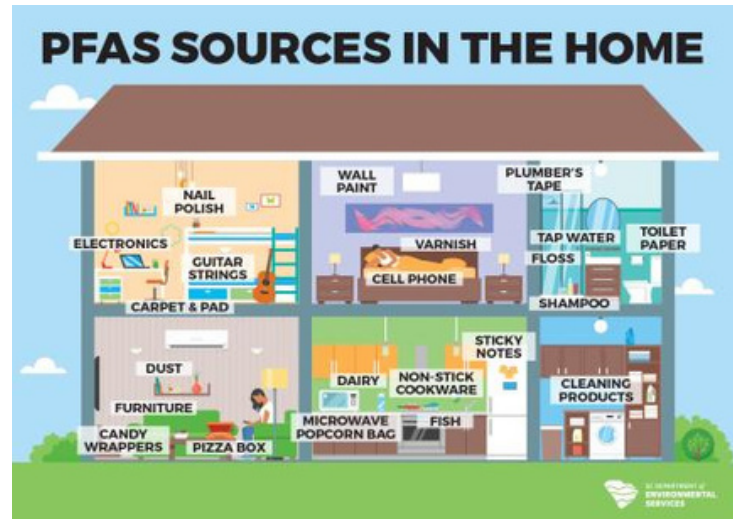
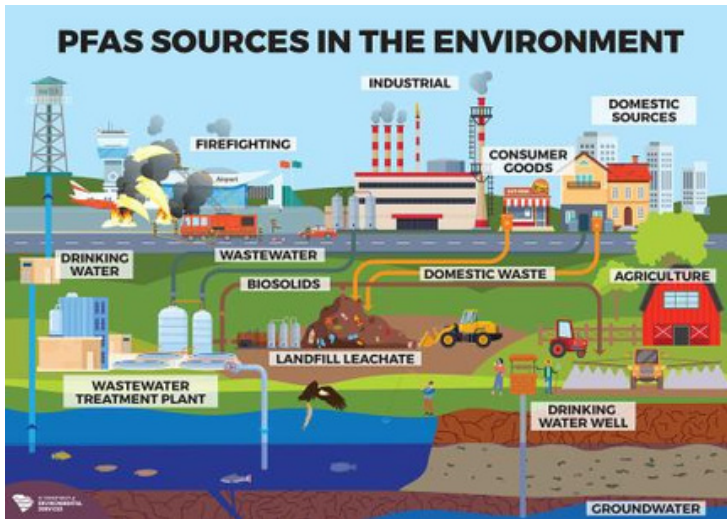


### UPCOMING EVENTS, INFO, & FYIS

# PFAS 101: WHAT'S IN YOUR WATER?

## >>> The Forever Chemicals Explained

Per- and Polyfluoroalkyl Substances (PFAS) are a group of manufactured chemicals that industries have been using in their products since the 1940s. Their practically indestructible nature has led scientists to refer to them as “the forever chemicals”. While this characteristic seemed to be a useful contribution to consumer products, concerns have come to light regarding PFAS accumulation in our bodies, wildlife, and the environment. Because PFAS is present virtually everywhere, it makes its way into our food, water, air, and everyday products like clothes, cosmetics, and electronics. According to the EPA, the risks associated with PFAS increase over time as the chemicals build up in our systems. This can lead to potential health problems including reproductive and developmental effects, immune deficiencies, and higher risks of some cancers. However, don't be discouraged! In South Carolina, the Department of Environmental Services is collaborating with the EPA to continue PFAS research in the state. Since these chemicals have become more restricted over the past few decades, concentrations of PFAS in the blood have been seen to decrease. These organizations are working to ensure water systems are maintained, up to federal standards, and don't exceed maximum contaminant levels. While they are committed to protecting people's health with these new environmental standards, it is ultimately up to you to be conscientious about what products you use as well as staying informed about the latest PFAS information, efforts, and actions.



For more PFAS resources, click [here](#)!

If you have a private well that is used for drinking water, you can apply to have your well tested for PFAS free of charge through the South Carolina Department of Environmental Services!

- [Individual Private Well PFAS Assessment Application](#)

# STORMWATER SUMMER

2



## THINK BEFORE YOU SPLASH!

With hurricane season officially underway in the state of South Carolina, stormwater becomes more important than ever during the summer months! Taking a plunge in your local waterways to escape the heat may not be as refreshing as it seems. When it rains, water runs off impervious surfaces into the streets. This stormwater or “runoff” collects a variety of contaminants including fertilizers and pesticides from lawns, oil and gas leaks from cars, trash, and even an overwhelming bacteria load from pet waste that doesn’t get picked up. A

common misconception is that this water, after making its way through storm drains and ditches, is treated; however, in reality, the runoff is deposited directly into your streams, rivers, lakes, and oceans, making it one of the greatest threats to water quality and safe, swimmable waters. So, what can you do?

- A good rule of thumb is to wait at least 48 hours after heavy rainfall before swimming in natural bodies of water to reduce your risk of getting sick from contaminants. Keep an eye on water quality testing in your area: <https://howmyscriver.org/>
- Install rain gardens to absorb runoff and filter pollutants naturally. Use native plant species!
- Use permeable pavement in driveways to reduce runoff.
- Pick up pet waste to prevent bacteria from entering waterways.
- Limit the use of fertilizers and pesticides—choose eco-friendly alternatives.
- Keep storm drains clear of trash, debris, and other contaminants.
- Install rain barrels to collect and use rain water for gardening.
- Redirect downspouts into gardens or grassy areas instead of driveways.
- Educate others!

Stormwater doesn’t have to ruin your summer fun. Do your part in reducing runoff and pollutants, and watch your local waterways flourish!

# STORMWATER CROSSWORD

Answers will be revealed in next month's newsletter!

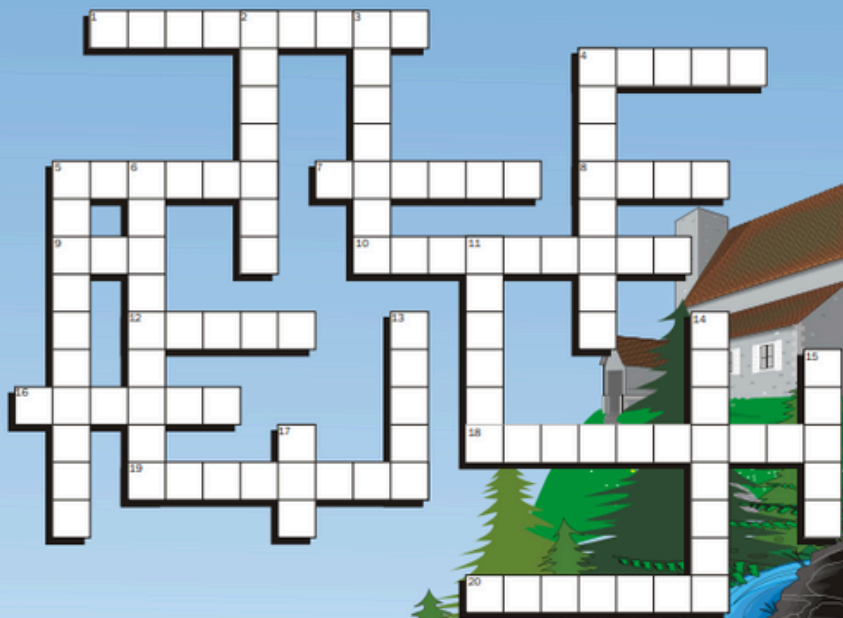
## Take the Stormwater Runoff Challenge

### Across:

- 1) The area of land that drains into an estuary, lake, stream, or groundwater is known as a \_\_\_\_\_.
- 4) The \_\_\_\_\_ of speeding boats can erode shorelines.
- 5) Maintaining your \_\_\_\_\_ tank will help to prevent bacteria and nutrients from leaking into groundwater and surface waters.
- 7) Wetland plants act like a natural water \_\_\_\_\_, removing harmful pollutants from stormwater runoff.
- 8) Leave your grass clippings on your \_\_\_\_\_ to reduce the need for commercial fertilizers.
- 9) A single quart of motor \_\_\_\_\_, if disposed of improperly, can pollute 2 million gallons of water.
- 10) Fertilizers and animal wastes contain \_\_\_\_\_ that "feed" algae and other aquatic plants harmful to water quality.
- 12) Polluted runoff from both rural and \_\_\_\_\_ sources has a significant impact on water quality.
- 16) Storm \_\_\_\_\_ don't always connect to sewage treatment plants, so runoff can flow directly to rivers, lakes, and coastal waters.
- 18) Follow directions carefully when applying \_\_\_\_\_ on your lawn—more isn't always better.
- 19) Polluted runoff (also called source pollution) comes from so many places that it's hard to "pinpoint" a source.
- 20) Yard and vegetable food waste are suitable additions to a \_\_\_\_\_ pile.

### Down:

- 2) Don't dump used motor oil into storm drains. \_\_\_\_\_ it!
- 3) \_\_\_\_\_ of soil from barren land can cloud nearby streams.
- 4) \_\_\_\_\_ prevent flooding, improve water quality, and provide habitat for waterfowl, fish, and wildlife.
- 5) Marking "Do Not Dump, Drains to Bay" on a \_\_\_\_\_ is one way to educate people about polluted runoff.
- 6) Excess sediment, nutrients, toxics, and pathogens are all types of runoff \_\_\_\_\_.
- 11) Polluted \_\_\_\_\_ is the nation's #1 water quality problem.
- 13) The cattail is one wetland \_\_\_\_\_ that helps purify polluted runoff.
- 14) Too much \_\_\_\_\_ in water can harm aquatic life.
- 15) Proper crop and animal management on \_\_\_\_\_ helps to control water pollution.
- 17) \_\_\_\_\_ impact development helps control stormwater pollution through conservation approaches and techniques.



For more information, please visit EPA's  
Polluted Runoff web site at [www.epa.gov/nps](http://www.epa.gov/nps)

Printed with soy based ink on recycled paper.

# UPCOMING EVENTS, INFO, & FYIS

## >>> HOUSEHOLD HAZARDOUS WASTE DROP OFF

**For Lexington County Residents Only.** Head on over to the Republic Services Collection Center (1741 Calks Ferry Road in Lexington) to responsibly dispose of your hazardous waste items! See the list of accepted materials below. The drop off dates are **July 18<sup>th</sup> 9am-3pm and July 19<sup>th</sup> 9am-3pm.**



FLAMMABLE

### Accepted Materials Include:



FLAMMABLE

<ul style="list-style-type: none"> <li>Acids</li> <li>Brake fluid</li> <li>Bug spray</li> <li>Car Wax</li> <li>Carburetor cleaner</li> <li>Degreasers</li> <li>E-Cigarettes</li> <li>Fertilizer w/ weed killer</li> <li>Fire extinguishers</li> <li>Furniture stripper</li> <li>Glue with solvents</li> <li>Insect killer</li> <li>Lighter fluid</li> <li>Lithium Ion Batteries</li> <li>Mercury including thermometers, thermostats and debris</li> <li>Mothballs</li> </ul>	<ul style="list-style-type: none"> <li>Nail Polish Remover</li> <li>Paint, liquid (limit 8 gal)</li> <li>Paint related materials (ex. thinner)</li> <li>Perfume (Body Sprays)</li> <li>Pesticides, insecticides, fungicides, herbicides</li> <li>Polish with solvents</li> <li>Pool chemicals</li> <li>Roach and ant poison</li> <li>Rodent bait</li> <li>Spot remover</li> <li>Spray paint</li> <li>Stain, varnish and lacquer</li> <li>Turpentine</li> <li>Weed killer</li> <li>Wood preservatives</li> </ul>
---	---

## >>> LEXINGTON BLOWFISH GAMES

Select Blowfish games this season will allow patrons to bring their furry friends along. At a select number of “Dog Days”, the LCSC will have a booth set up for our Trash the Poop campaign. Come learn about why and how to properly dispose of your pet’s waste. There will be mini games and opportunities to win awesome prizes! Save the following dates to check us out!

- July 16, 2025
- July 22, 2025

# UPCOMING EVENTS, INFO, & FYIS CONT'D

## >>> DRIP, DROP, RAINBOWS

Create a unique and colorful rain chain while learning their eco-friendly benefits, such as water conservation and erosion prevention. In partnership with Lexington County Public Library and County of Lexington Solid Waste Management. (ages 12+)



## >>> SAVE THE DATE! PAPER SHRED EVENT

Join Keep the Midlands Beautiful on **August 2<sup>nd</sup>** for their Paper Shred Event! As a **Lexington or Richland County resident**, take advantage of this safe and secure way to dispose of your personal documents. The event will take place at **Irmo Community Park from 9am-12pm**.

## LET'S CONNECT

Learn more at [lcswc.com](http://lcswc.com)

 County of Lexington, SC



**Lexington County  
Land Development**

212 S Lake Drive, Suite 401  
Lexington, SC 29072  
Phone: (803) 785-8121