

>>> LCSC PRESENTS <<<

WATER WATCH

Keeping you informed about local stormwater issues and LCSC activities



The Lexington Countywide Stormwater Consortium (LCSC) is comprised of the following communities: Lexington County, Cities of Cayce and West Columbia, and the Towns of South Congaree, Springdale, Irmo, Pine Ridge, and Lexington.

We seek to protect the natural resources in Lexington County from pollution caused by residential and business activities. We accomplish this by the following:

- (1) Creating a model collaborative water quality education program,
- (2) Fostering citizen involvement and encouraging behavioral change, and
- (3) Enforcing state and local stormwater regulations.

Through these accomplishments, we strive to achieve clean and healthy streams, rivers, lakes, and groundwater.

INCLUDED IN THIS ISSUE

TO TREE, OR NOT TO TREE



READ MORE ON PG. 1

How to reuse and repurpose your Christmas tree.

READ MORE ON PG. 2

Tips and tricks from Keep the Midlands Beautiful.



LEXINGTON COUNTY HOLIDAY RECYCLING GUIDE

LEXINGTON COUNTY – SEPTIC GRANT



READ MORE ON PG. 3

Funds may be available to you!

READ MORE ON PG. 4

You won't want to miss this!



UPCOMING EVENTS, INFO, & FYIS

A close-up photograph of a snow-covered evergreen branch, likely a spruce or fir, with white snow clings to the green needles. The branch is in sharp focus, while the background is blurred.

TO TREE, OR NOT TO TREE¹

»» Streambank Restoration with Christmas Trees

The Green Lake Association in Wisconsin hosts a conservation effort called Balsams for Brookies, which encourages residents to donate their Christmas trees to create fish habitat, improve water quality, and restore stream structure. These communities are using Christmas trees to make effective sand and soil erosion barriers, especially for lake and river streambank stabilization.

Streambank erosion is a common issue that can be seen in your own backyard. While it can be naturally occurring, it is also worsened by a lack of a soil-stabilizing root system.

To reduce erosion on your property, plants are your first line of defense. Trees and shrubs slow surface water and increase water infiltration into soil, thereby reducing erosive energy.

What do Christmas trees have to do with it?

Pine trees are a useful tool in stream restoration projects for stabilizing streambanks. This is an inexpensive, effective way of slowing fast-moving current and stopping stream bank erosion. In a few years, the trees will help form new areas where healthy vegetation can stabilize the stream into the future!

Other options include:

- Recycling at your local collection/recycling center (see page 4)
- Mulching
- Cutting for firewood
- Using to ash or insulate your garden

LEXINGTON COUNTY

HOLIDAY

RECYCLING GUIDE

RECYCLE THESE IN YOUR CURBSIDE BINS
OR
AT COLLECTION AND RECYCLING CENTERS

Cardboard boxes & tubes

Plain, flat wrapping paper

Catalogs & magazines
Greeting cards, envelopes, flyers &
unwanted mail

Brown bags

Glass bottles & jars
(not accepted in Cayce, Irmo or
Town of Lexington)

Plastic containers, cartons, metal cans

RECYCLE THESE AT
COLLECTION AND RECYCLING CENTERS
ONLY

Christmas Trees
(Real trees in "clean wood waste"
& fake trees in "scrap metal")

Christmas lights
(with scrap metal)

Used cooking oil
(Under carport cover)

Shredded paper
(In office paper unbagged)

CANNOT BE RECYCLED



NO bows or
ribbons



NO ornaments
or tinsel



NO tissue
paper

SPECIAL RECYCLING



Take plastic bags to
local stores

FOR MORE INFORMATION ABOUT RECYCLING IN LEXINGTON COUNTY VISIT KMBSC.ORG

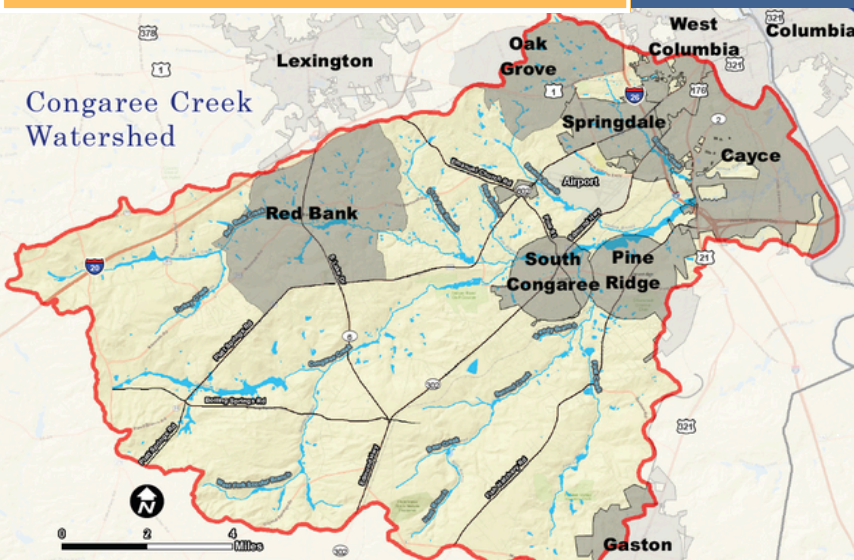
Lexington County – Septic Grant

Funds may be available to you!



CONGAREE CREEK WATERSHED

IF YOU ARE HAVING ANY OF THE FOLLOWING PROBLEMS, **YOUR SEPTIC SYSTEM MAY NEED TO BE REPAIRED.**



- Damp/soggy areas in the yard during dry weather, near the drainfield or tank
- Sewage odor near drainlines or tank
- Areas of the yard with bright green/spongy/ lush grass, even during dry weather
- Discharging untreated wastewater to the ground surface

Learn more here!



Check map <https://tinyurl.com/Congaree319> to see if you are in the Congaree Creek Watershed.



lcswc.com/water-quality-grants/

*** Must be in the Lexington County Congaree Creek Watershed. Program is first come, first served while funding is available!**

Contact 319Grant@lexingtoncounty.sc.gov

or 803.785.8121 with questions or to submit application material!



SC DEPARTMENT of
**ENVIRONMENTAL
SERVICES**

Grant funding is provided through an award from the South Carolina Department of Environmental Services (SCDES) to protect water quality in the Congaree Creek Watershed. This project is being funded, in part, by the United States Environmental Protection Agency and made possible by SCDES.





➤➤➤ SPOTLESS SERVICE SATURDAY

Join Keep the Midlands Beautiful for the first Spotless Service Saturday of the year! From **10AM-12PM on January 17, 2026**, you can help clean up Richland County's Blarney Drive.

Register and get more information here: <https://bit.ly/jan2026sss>

➤➤➤ CHRISTMAS TREE RECYCLING IN LEXINGTON COUNTY

- Trees and other greenery (wreaths, boughs, etc.) must be stripped clean of all decorations, including lights, ornaments, ribbons, artificial flowers, tinsel, etc.
- All clean wood waste should be brought to the Edmund Landfill and Compost Facility, 429 Landfill Lane, Lexington. Locations are also available on Ball Park Road (301 Ball Park Road, Lexington), Bush River Road (6109 Bush River Road, Columbia), Chapin (103 Distant Lane, Chapin), and Sandhills (3241 Charleston Highway, West Columbia).
- Tree branches greater than four feet in length or four inches in diameter must be brought to the Edmund Landfill and Compost Facility.

LET'S CONNECT

Learn more at lcswc.com

 County of Lexington, SC



**Lexington County
Land Development**

212 S Lake Drive, Suite 401
Lexington, SC 29072
Phone: (803) 785-8121